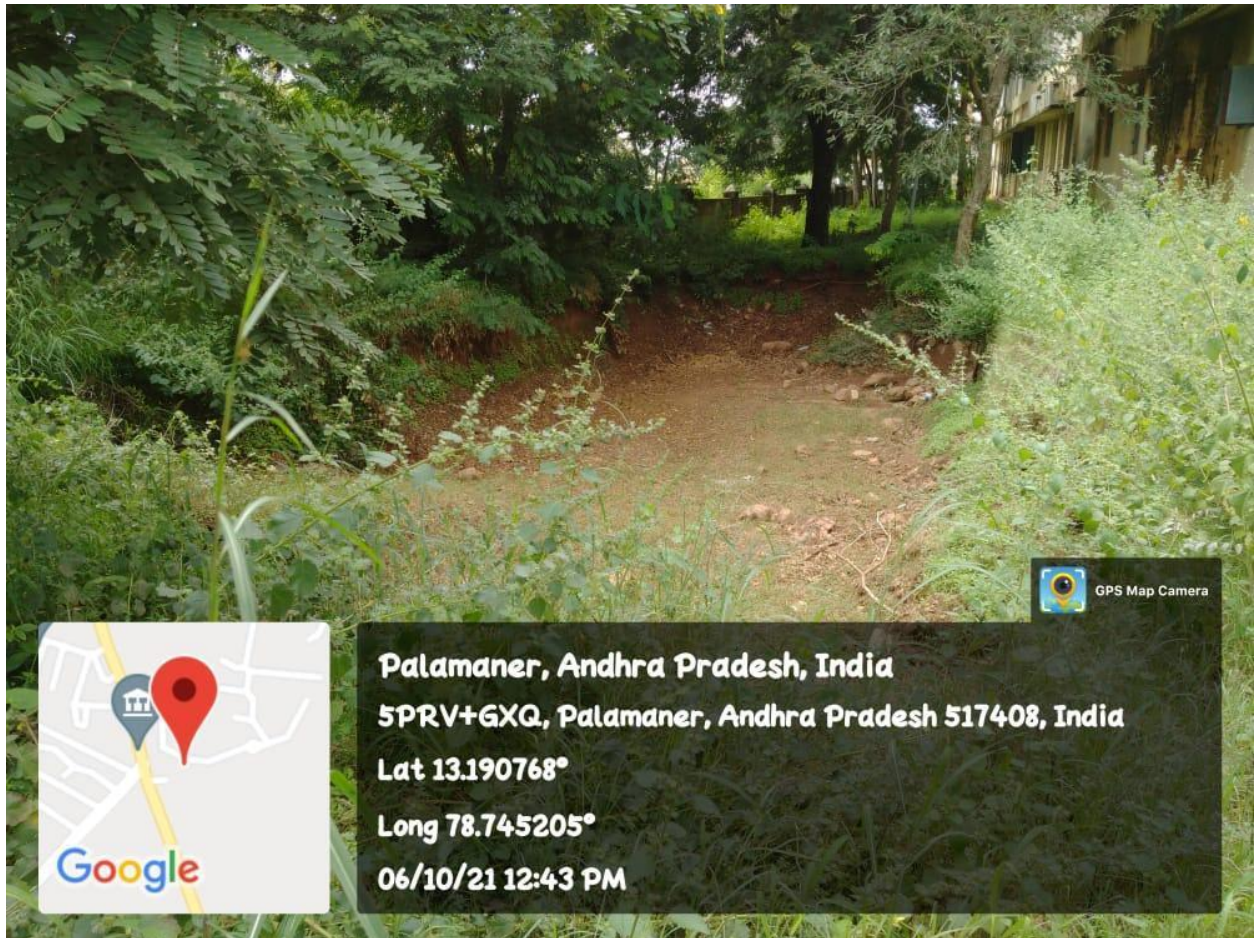


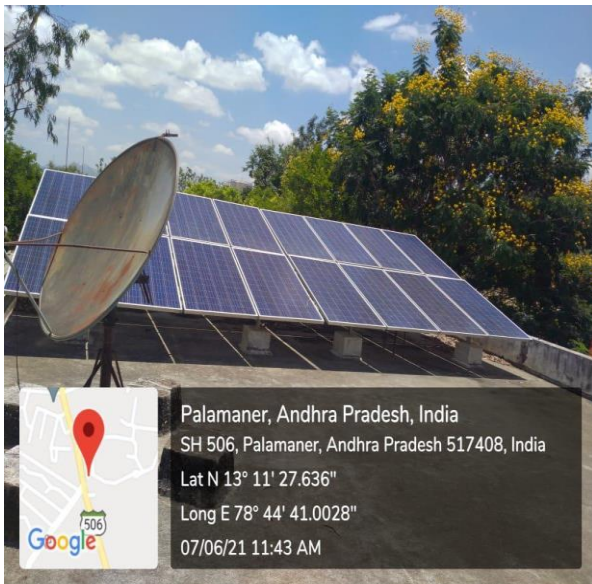
POND



Palamaner, Andhra Pradesh, India
5PRV+GXQ, Palamaner, Andhra Pradesh 517408, India
Lat 13.190768°
Long 78.745205°
06/10/21 12:43 PM



SOLAR PANELES



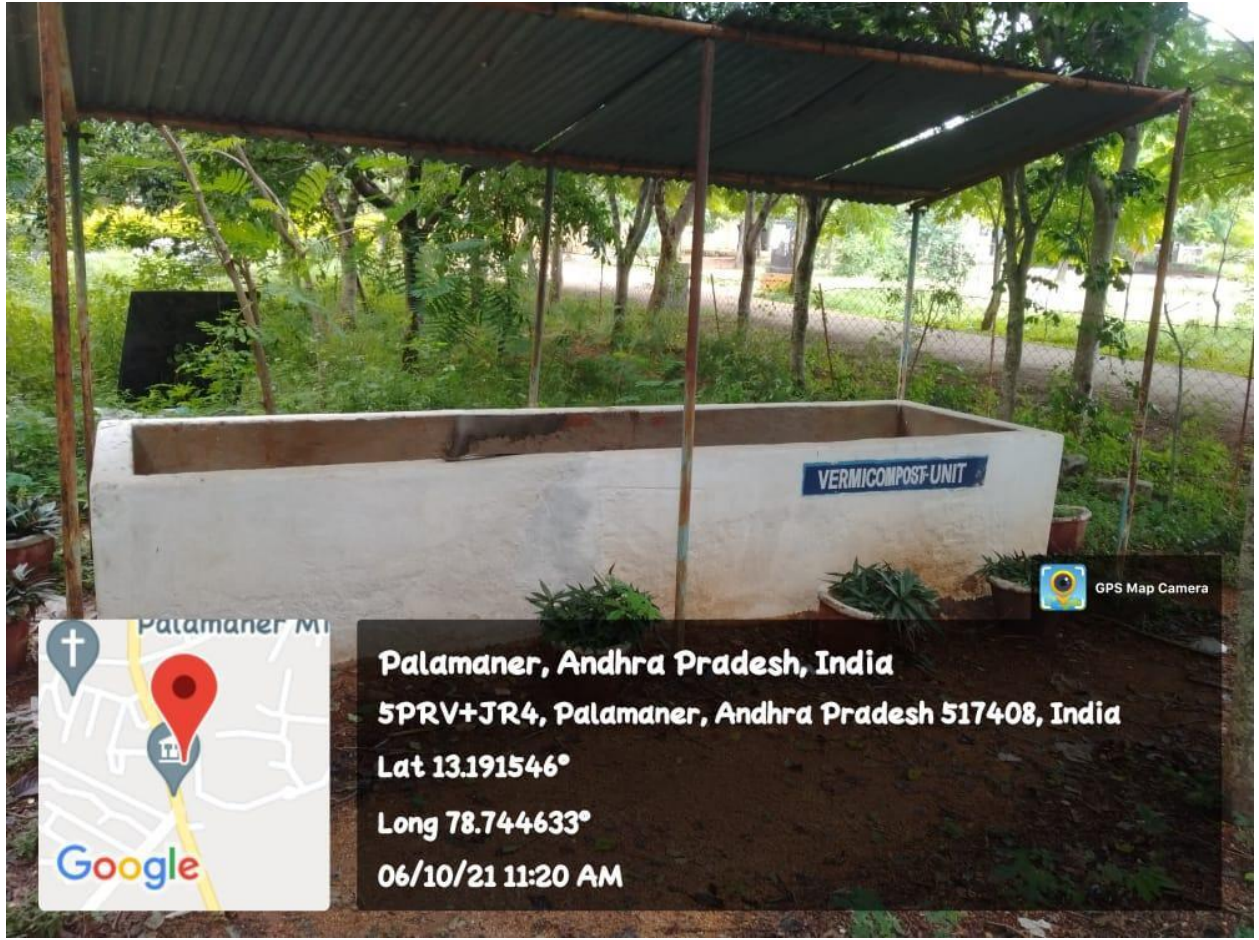


TREE -

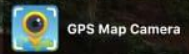
PLANTATION

As a part of sapling plantation, the Principal, The Vice Principal and the staff planted saplings in the college ground. The shade giving trees are given importance as the path for walking is there.

Earth worm pit



Palamaner, Andhra Pradesh, India
5PRV+JR4, Palamaner, Andhra Pradesh 517408, India
Lat 13.191546°
Long 78.744633°
06/10/21 11:20 AM



Botanical Garden







